



With major software vendors now reporting more than 8,000 vulnerabilities each year¹, eradicating all of the potential threats to your network is a daunting task. PatchLink Update delivers a cost-effective way to quickly, accurately and securely deliver and monitor software patches throughout your network.

Market Leading Solution

PatchLink Update, ranked the #1 patch management solution by IDC for the past 3 years, is a comprehensive patch and vulnerability management solution that enables you to:

- ▣ Reduce corporate risk through the timely, proactive elimination of operating system and application vulnerabilities.
- ▣ Demonstrate compliance with security policies and government regulations through continuous patch monitoring and comprehensive reporting.
- ▣ Decrease IT costs and improve productivity with a highly automated, subscription-based patch management solution.



PatchLink Update - Dashboard View

Going Beyond Patch Management

PatchLink Update™ provides rapid, accurate and secure patch management, allowing you to proactively manage threats by automating the collection, analysis and delivery of patches throughout your enterprise. PatchLink Update significantly decreases the costs involved in securing your organization from worms, trojans, viruses and other malicious threats.

Through the use of an innovative open standard architecture, PatchLink Update leverages software and hardware vendors own remediation packages download infrastructure for a fast and efficient remediation process. This enhanced Lumension Security Content Architecture enables organizations to go beyond patch management and address the entire “security value chain” from Vulnerability Assessment to Security Configuration Management regulatory compliance needs.

Vulnerability Name	Vulnerability Release Date	Total Devices	Applicable Devices	Devices Detecting	Devices Patched	Not Patched	Percent Patched
MS08-001 941644 Vulnerabilities in Windows TCP/IP	1/8/2008 7:04:08 PM	32	19	0	7	12	36.84
MS08-001 941644 Vulnerabilities in Windows TCP/IP (Vista) (All Languages)	1/8/2008 7:04:07 PM	32	2	0	2	0	100.00
MS08-002 943485 Vulnerability in LSASS	1/8/2008 7:27:33 PM	32	19	0	7	12	36.84
MS08-003 946538 943484 Vulnerability in Active Directory	2/14/2008 5:18:30 PM	32	1	0	0	1	0
MS08-004 946456 Vulnerability in Windows TCP/IP (Vista) (All Languages) (Rev 2)	2/13/2008 1:16:10 PM	32	1	0	1	0	100.00
MS08-005 942831 Vulnerability in Internet Information Services (Rev 3)	2/14/2008 6:44:11 PM	32	5	0	1	4	20.00
MS08-006 942830 Vulnerability in Microsoft Internet Information Services (Rev 4)	2/14/2008 2:45:42 PM	32	5	0	2	3	40.00
MS08-007 946026 Vulnerability in WebDAV Mini-Redirector	2/12/2008 10:22:55 PM	32	9	0	5	4	55.56
MS08-007 946026 Vulnerability in WebDAV Mini-Redirector (Vista) (All Languages) (Rev 2)	2/12/2008 7:53:53 PM	32	1	0	1	0	100.00
MS08-008 947890 943055 Vulnerability in OLE Automation (Rev 2)	2/12/2008 10:38:25 PM	32	9	0	5	4	55.56
MS08-008 947890 943055 Vulnerability in OLE Automation (Vista) (All Languages)	2/12/2008 10:38:24 PM	32	1	0	1	0	100.00
MS08-009 947077 943990 943957 943983 (English/MUI) Vulnerability in Microsoft Word (Rev 3)	2/12/2008 10:59:20 PM	32	5	0	2	3	40.00
MS08-010 944533 Cumulative Security Update for Internet Explorer	2/12/2008 10:59:26 PM	32	9	0	5	4	55.56
MS08-010 944533 Cumulative Security Update for Internet Explorer	2/12/2008 4:20:21 PM	32	9	0	5	4	55.56

PatchLink Update - Vulnerability Analysis Report

Features & Benefits

▣ **Support for Security and All Other Patches:** Support of security and Operating Systems patches (including Windows, Mac, Unix, Linux, Novell) as well as business software and hardware patches

▣ **Innovative Open Architecture:** providing through the use of open standards a greater support for additional vendors leveraging their own technology to deliver remediation binaries to PatchLink Update and allow deployment in less than a day for any remediation package

▣ **Agent-Based Architecture:** Protect mobile devices that are often disconnected from the network and reduce network bandwidth usage

▣ **Inventory Management:** Establish a comprehensive and detailed inventory including software, hardware and services on all network devices

▣ **Flexible Scanning and Deployments:** Control the scanning and distribution schedule to minimize business disruptions

▣ **Advanced Grouping with Directory Integration:** Dynamic creation of groups based on existing Active Directory environments, with cascading inheritance for agent policy, mandatory baseline and user permissions

▣ **Role-Based Administration:** Delegate remediation and reporting activities to improve productivity while maintaining security

▣ **Subscription Service:** Receive up-to-date content via secure, encrypted transmissions

▣ **Policy-Based Administration:** Establish and automatically enforce minimum security policy across your network

▣ **Comprehensive Reporting:** Document changes and demonstrate progress toward audit and compliance requirements

Thorough, Agent-Based Vulnerability Assessments

Quickly and accurately compile a comprehensive, centralized view of all of the vulnerabilities on your network through intensive agent-based scans of each managed endpoint.

Unique Intelligent and Timely Patch Deployment

Complete protection for all major operating system and application vulnerabilities via a multi-faceted patch acquisition strategy that directly solicits up-to-date content from leading software vendors.

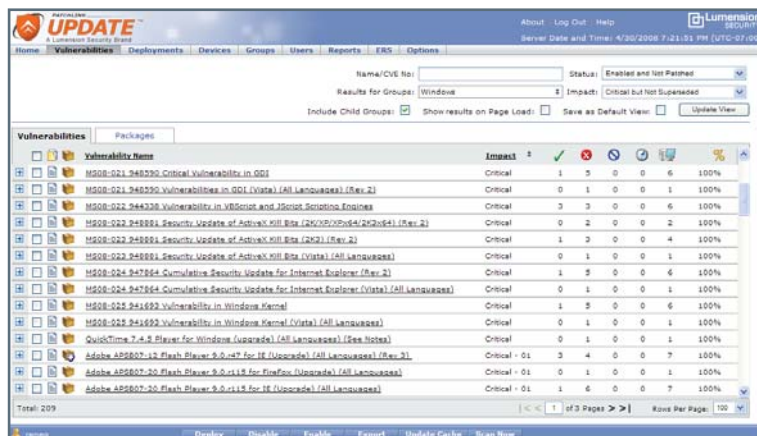
All remediation packages are available within a 1 day timeframe maximum. PatchLink Update leverages software vendors' original remediation package download location for an enhanced and fast package availability.

Continuous Validation of Policy Compliance

Continuously monitor and report the vulnerability and patch status of each managed endpoint, with automatic e-mail alerts for failed deployments.

Comprehensive Reporting

Address operational, management and compliance reporting needs with over 20 standard reports that document vulnerabilities, patch deployments, patch status, inventory and more – at individual machine or aggregated levels.



PatchLink Update - Vulnerabilities View

How It Works:

Vulnerability Detection and Assessment

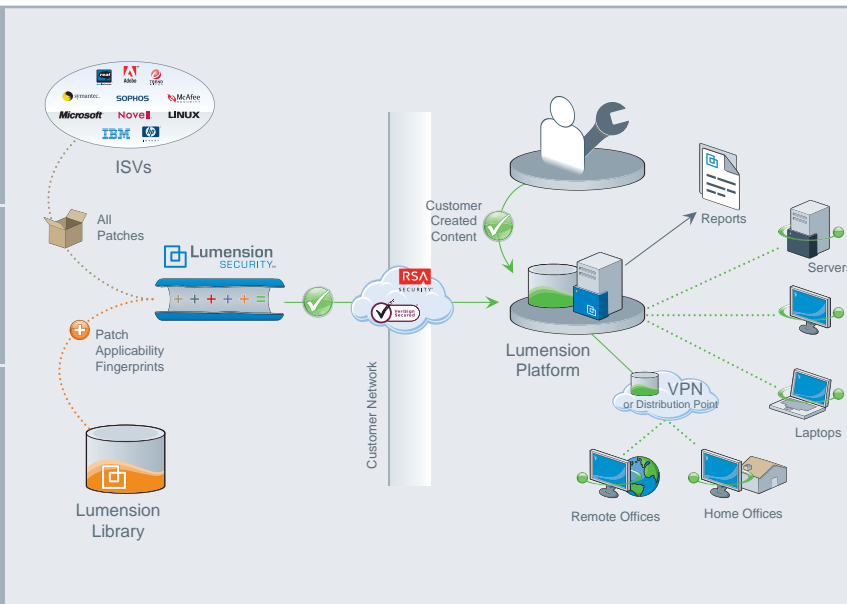
PatchLink Update proactively detects and assesses application, operating system and operational vulnerabilities on corporate endpoints.

Remediation Policies Defined

Enterprise-wide change management policies are established around the remediation of security and operational vulnerabilities.

Automated Patch Deployment and Remediation

Automated deployments are scheduled based upon patch criticalities and defined security policies, leveraging vendors' own remediation download infrastructure.



Start Your Free 30-Day Evaluation

To learn more about how PatchLink Update can dramatically improve the security of your organization, please visit us on the web at www.lumension.com.

Sources:

1. Carnegie Mellon University's Computer Emergency Response Team (CERT) reported 8,064 published vulnerabilities between 1995 and 2006



Lumension Security - Luxembourg
 Atrium Business Park
 Z.A. Bourmicht
 23, rue du Puits Romain
 L-8070 Bertrange
 Luxembourg
 +352 265 364 11 / www.lumension.com



©2008 Lumension Security. All rights reserved. Lumension Security, the Lumension Security logo, and the PatchLink and Sanctuary product names and logos are either registered trademarks or trademarks of Lumension Security. In addition, other companies' names and products mentioned in this document, if any, may be either registered trademarks or trademarks of their respective owners.