



## Consolidated Vulnerability Management

Effectively managing the onslaught of threats targeting today's large, complex networks often requires a large number of IT professionals deploying disparate point solutions across multiple locations. This requirement of process and technology increases security management costs and reduces your ability to enforce global policies or generate consolidated compliance information.

The PatchLink Security Management Console enables centralized command and control of your entire vulnerability management process – network discovery, agent deployment, vulnerability assessment, threat remediation, audit and reporting – all from a single, central location. The Security Management Console is a role-based security management interface that can direct multiple PatchLink Scan assessment and/or PatchLink Update remediation engines, enabling uniform policy enforcement and enterprise-wide compliance report generation.

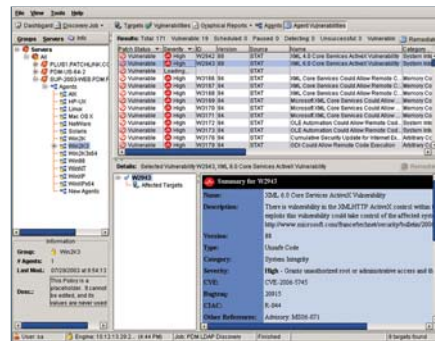
- ▣ Enterprise Security Visibility
- ▣ Centralized Policy Enforcement
- ▣ Aggregate Policy Compliance Reporting
- ▣ Improved Operational Efficiency/Lower Security Management costs

## Enterprise-Wide Visibility of your Security Posture

By aggregating network discovery and vulnerability assessment information from multiple PatchLink Scan and PatchLink Update engines throughout your enterprise, the Security Management Console provides you with complete visibility into the security posture of every asset in your environment, including routers, printers, servers, laptops, switches, wireless access points and more. This comprehensive discovery allows you to identify all unmanaged and rogue devices that are susceptible to attack. Once these devices are identified, you can automatically deploy remediation agents with a few mouse clicks. The Security Management Console also provides on-demand aggregation of detailed vulnerability assessment data from all network and agent-based scans, providing a holistic view of the vulnerabilities that exist within your organization. The solution allows for both top-down and distributed network administration and supports the traditional security principles of least privilege, separation of duties, data abstraction, and the security tenet of “need to know”.

## Centralized Enforcement of your Security Policies

The Security Management Console provides flexible and granular definition and enforcement of vulnerability management policies across your entire enterprise. Using a capability called Minimum Baseline, you can set minimum security thresholds that must be met by each managed machine. If the patch levels identified in the baseline policy do not exist on the machine, the local agent will automatically request and execute the appropriate patches, bringing the machine into compliance with corporate policy.



PatchLink Security Management Console

## Features & Benefits

- ▣ **Flexible Architecture** : Flat or Hierarchical implementations, with a single management console instance or multiple consoles rolling up into a centralized, master console
- ▣ **Common Criteria EAL2 Certified** : The Common Criteria Evaluation and Certification Scheme (CCS) Certification Body has asserted that PatchLink Security Management Consoles complies with the all specified security requirements
- ▣ **Consolidated Views** : Multiple scan and remediation reports can be merged together to form a more comprehensive security posture
- ▣ **Highly Scalable** : Currently deployed by customers across hundreds of thousands of endpoints
- ▣ **Role-Based Administration** : Delegate remediation and reporting activities to improve productivity while maintaining security
- ▣ **Policy-Based Administration** : Push out mandatory baseline policies to all endpoints – a key aspect of regulatory compliance
- ▣ **Standard Industry Classifications** : Vulnerabilities linked to industry classifications like CVE, BugTraq and IAVA codes for easy identification
- ▣ **Comprehensive Reporting** : Flexible reporting of asset inventory, network or agent-based scans, vulnerability remediation and much more

